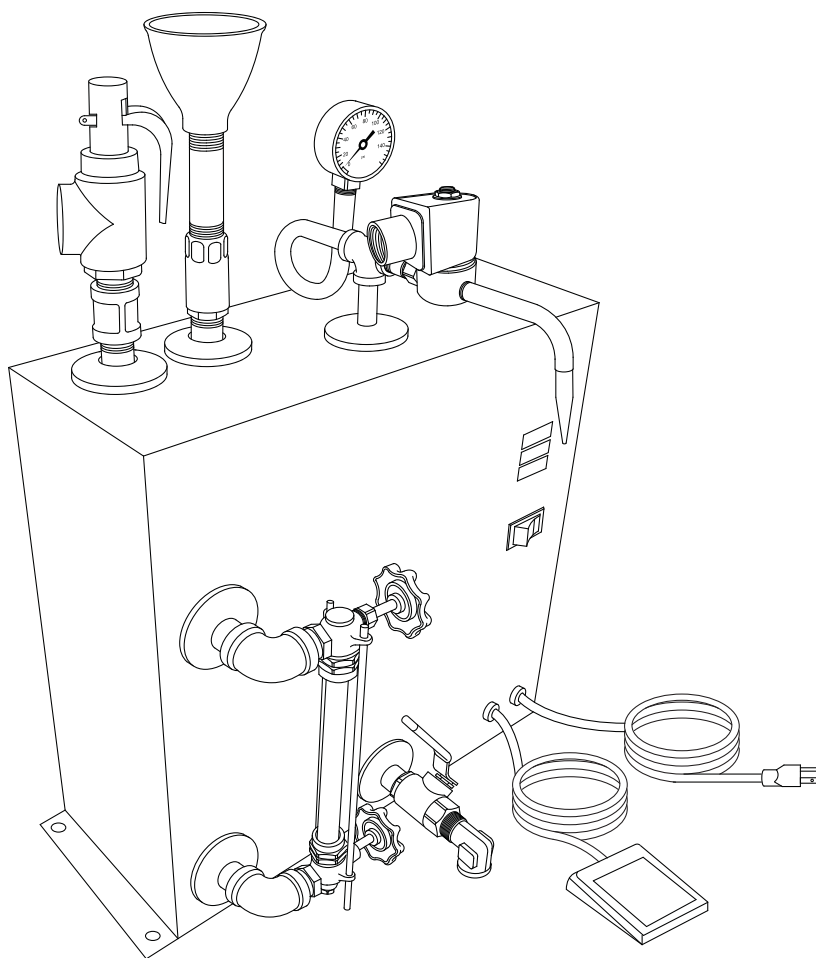


# STEAMMASTER®

Electric Steam Cleaner

Model: HPJ-2S

**IMPORTANT!**

*Please carefully review the contents of this Manual prior to set-up and operation of your steam cleaner. File this Manual in a safe place.*

**INSTALLATION AND ASSEMBLY INSTRUCTIONS**

1. The Steamaster HPJ-2S steam cleaner should only be placed on a sturdy work table, and positioned for accessible use and drainage.
2. Place the Steam Release Foot Pedal on the floor in a convenient area for ease of foot operation.
3. Make certain the 3-Position Toggle Switch on the side of the machine is OFF which is in the center position. The switch turns off all electrical power to the machine.
4. Before plugging in the electrical cord, check you **ELECTRIC CURRENT** which must correspond to that indicated on the nameplate located on the side of the machine. Steamaster HPJ-2S units (except 240-Volt special orders) are wired for 15 amps, 120 Volt operation in any standard 120 Volt outlet. However, we recommend an isolated (20-amp line).

**WARNING:** The Safety Valve must be pointed in a direction in which it can release without causing personal injury or property damage. If necessary have a plumber pipe the outlet to a safe location. When piping the discharge outlet, do not pipe it in a manner which would restrict it's flow.

**OPERATING INSTRUCTIONS**

**Air Venting the System.** The following procedure will expedite the water fill procedure and operation.

1. Open Funnel Valve (Fig. 1) by raising handle at top of machine.

**IMPORTANT!** Water in machine **MUST** always be kept above **LOW LEVEL MARK** on Glass Gauge ( $\frac{1}{2}$ " from bottom of Glass Gauge). Water must be added at this time.

2. Place the Rocker Switch in the Fill position. This will energize (open) the steam solenoid valve and allow air to escape when water is added to the machine.
3. Fill with clean water until water level reaches the **HIGH LEVEL MARK** on glass gauge, about 6½ quarts (Fig. 2). Place Rocker switch in the OFF position. Close the funnel valve.
4. Place Rocker Switch in the Heat Cycle position. The **HEATING Light** will now go on, indicating that machine is now heating up and building steam pressure.
5. Allow machine to heat up (at least 45 minutes) until maximum (75-80 PSI) is reached. Check pressure gauge. **HEAT light** will go out indicating when the machine has reached maximum pressure. You will notice that **HEAT Light** comes on from time to time, as the pressure drops, and must be built up again.
6. Use the Foot Pedal to release steam, or place the Rocker Switch to the **STEAM** position to get constant steam.

**NOTE:** Every time water is added to the steam cleaner air enters the boiler and will cause the pressure to build to a level which is a few pounds higher than normal. This condition will return to normal when the air is released by releasing some steam.

**NOTE:** At each usage, do not steam directly on jewelry as there is condensation in the steam release pipe which must be released before steaming jewelry. Depress the Steam Release Foot Pedal to discharge condensation into sink or other vessel. After condensation has been discharged (approximately 5 seconds), the machine will be ready to steam jewelry.

7. To refill the Steam Cleaner during operation: Place the Rocker Switch in the **FILL STEAM** position. This will release steam pressure. Check Steam pressure Gauge. When there is **NO STEAM PRESSURE**, open the Funnel Valve and fill to the **HIGH WATER MARK** level in the Water Level Gauge. Close Funnel Valve. Return Rocker Switch to Heat Cycle position and allow cleaner to build pressure.
8. When Machine is Finished for the Day - Place Rocker Switch in the "OFF" position.

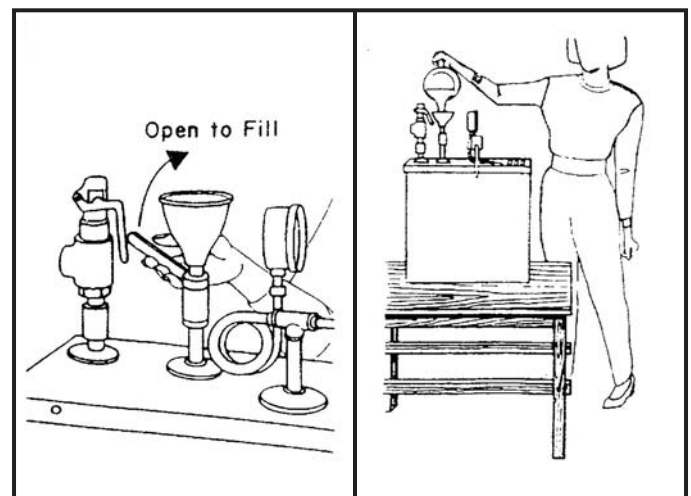
**For Best Cleaning Results** - Always depress Steam Release Foot Pedal for about five seconds to remove excess condensation. Carefully hold item to be cleaned With tweezers approximately one inch below the Steam Nozzle.

To clean trays of merchandise, hold tray about five Inches below Steam Nozzle. Move tray In a rapid side to side motion while steam cleaning.

**NOTE:** Do not attempt to clean soft, porous stones such as Opals. Nor, is it advisable to steam clean precious stones which have cracks. Do not steam clean stones exposed to extreme cold temperatures until they reach room temperature.

**SPECIAL PRECAUTIONS**

Live steam can cause bodily injury. Exercise care not to come in contact with the Steam Line during operation. Fittings on the machine are **HOT** and should not be touched during operation. Place the Steam Release Foot Pedal in a location where it will not be accidentally depressed.



## Electric Steam Cleaner

Model: HPJ-2S

**TROUBLESHOOTING YOUR STEAM ASTER  
MODEL HPJ-2S****When starting up, machine fails to operate:**

1. Check to see if plug is in electrical outlet. Is outlet good?
2. Check fuses in your main power supply.
3. Recheck your start-up operation steps.

**Machine cuts off while operating:**

A low water condition can activate Manual Reset Low Water Cut-Off Switch, reset light will come on. If this should happen, follow this procedure.

1. Bleed out all steam pressure in generator.
2. Fill water up to high level mark on Glass Gauge.
3. Push Reset Button on side of machine.

**NOTE:** Reset Button is to be used ONLY when machine cuts-off due to a low water condition!

(When low water cut off is activated) under normal conditions it is not necessary to use reset button.

4. Pilot Light will go on indicating that machine is now operational.

**IMPORTANT!** If Pilot Light fails to go on after following above instructions, check fuses in your main power supply.

**Condensation forms each time machine is used:**

This is a normal condition. Always depress lever of Steam Release Pedal Valve for about five seconds to remove excess condensation at each usage.

**MAINTENANCE INFORMATION**

During the first week of operation only, drain boiler at least every other day. In order to extend the life of the machine, drain boiler at least once each week under 10 lbs. of steam pressure, with electric current turned off.

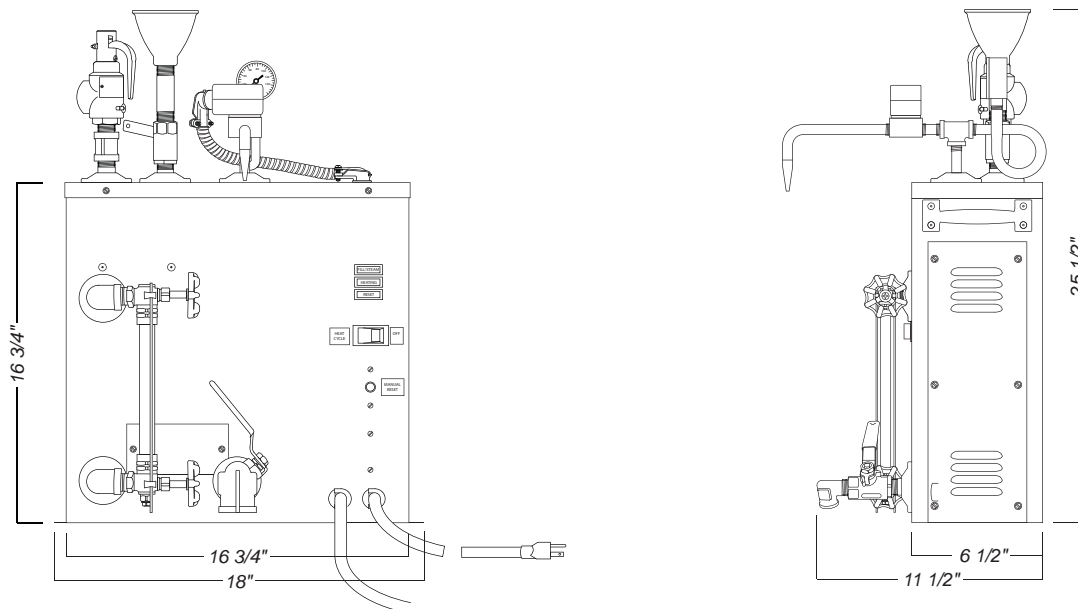
After draining, flush out boiler with plain water, then refill machine to high level mark on Glass Gauge. Drain Valve is located on lower left side of the machine.

The exterior metal cabinet and parts should be wiped off on a regular basis with a damp cloth to maintain the new appearance of the machine. Do not allow the parts to become clogged with dirt and grime.

**IMPORTANT!** Water in machine MUST always be kept above LOW level mark on Glass Gauge ( $\frac{1}{2}$ " from bottom of Glass Gauge) in order to protect and extend the operating life of the heating element.

**WARNING:** Steam slowly erodes the sight glass. To prevent the sudden breakage or explosion of the gauge glass. It must be inspected on a regular basis for signs of deterioration.

**Sight Glass Inspection:** The sight glass should be inspected for deterioration each time the unit is refilled. Scratches, corrosion, chips, surface flaws, cracks, or nicks weaken the glass. To examine for these imperfections shine a very bright concentrated light at about 45 degree angle. Anything which glistens and catches the fingernail or any star-shaped or crescent-shaped mark which glistens is cause for replacement. Any gauge glass which appears cloudy or roughened and cannot be cleaned with commercial glass cleaners, should be replaced.

**Model HPJ-2S - General Arrangement**

# Electric Steam Cleaner

Model: HPJ-2S

## MODEL HPJ-2S PARTS LISTING

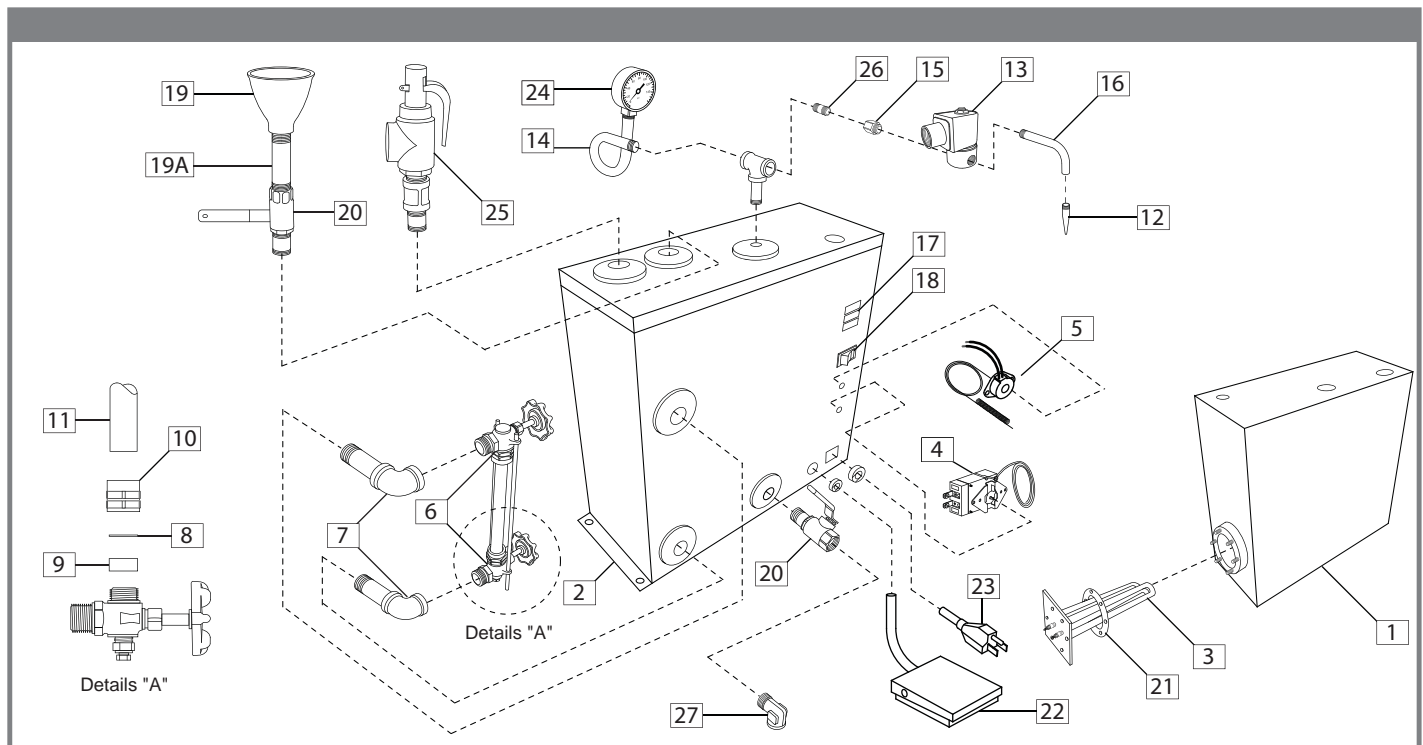
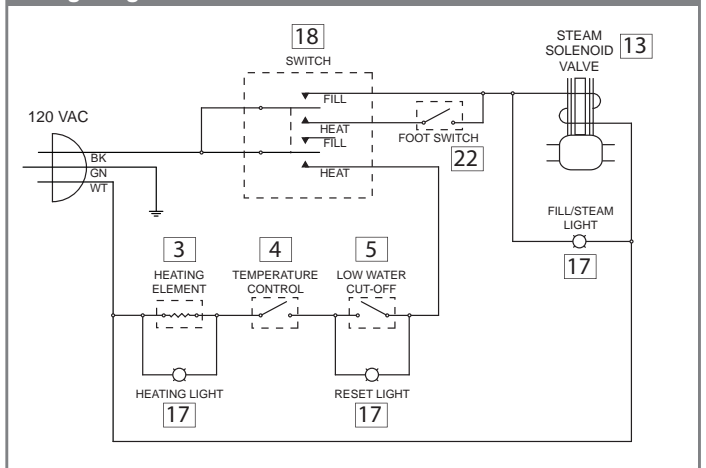
ITEM	PART NO.	DESCRIPTION	QTY
1	N/A	Tank	1
2	N/A	Cabinet	1
3	006-6348	Heating Element 120V, 1.5kW	1
4	007-4114	Pressure Control	1
5	007-4102	Thermodisc High Limit Reset Switch	1
6	007-1212	Water Gauge Fixture Top and Bottom	1
7	005-1014	Elbow, ½"NPT	2
8	007-1260	Water Gauge Friction Washer	2
9	006-3207	Water Gauge Rubber Washer	2
10	005-2138	Gauge Glass Packing Nut	2
11	007-4105	Gauge Glass, ¾" x 8"L	1
12	006-3216	Aluminum Nozzle	1
13	007-1102	¼" Steam Solenoid Assembly	1
14	005-2074	Pig Tail	1
15	005-2122K	¼" Adaptor with Strainer (inside)	1
16	005-2023	"L" Shape Nipple (¼" Male THD x ½" FTHD)	1
17A	007-1240-1	Indicator light Fill/Steam, Orange	1
17B	007-1240-2	Indicator light Heat, Orange	1
17C	007-1240-3	Indicator light Reset, Red	1
18	007-5275	Rocker Switch	1
19	006-3215	Funnel	1
19A	005-2017	½" x 3" nipple	1
20	007-1205	½" Ball Valve, Fill/Drain	2
21	006-4201	Gasket for heating element	1
22	007-1122	Electric Foot Switch – Pedal	1
23	002-1075	Cord with plug	1
24	007-1129	Pressure Gauge	1

ITEM	PART NO.	DESCRIPTION	QTY
25	007-1214	½" Safety Valve 100psi	1
26	005-1101	¼" x 1½", nipple	1
27	005-2109	Street Elbow ½" x ½"	1

### To order replacement parts:

When ordering replacement parts for your Steam Cleaner please provide your authorized Steammaster Sales Agent with both the part number and description.

### wiring Diagram



### IMPORTANT:

Please fill out and retain for your records. See label on machine for Serial Number.

Model No. \_\_\_\_\_

Serial No. \_\_\_\_\_

Date Purchased \_\_\_\_\_

Purchased from \_\_\_\_\_

**STEAMASTER CO., INC.**

25 East Union Ave

East Rutherford, NJ 07073

Tel. (201) 933-5800 Fax (201) 933-0746